



ACS DOBFAR S.p.A.

EMS COMMITMENT REPORT

INTRODUCTION

The adoption of an Environmental Management System (EMS) reflects ACS Dobfar S.p.A.'s proactive response to global environmental challenges such as pollution and resource degradation.

All ACS Dobfar production sites are equipped with EMS systems certified under the UNI-EN-ISO 14001 standard, ensuring that our production and operational processes are environmentally responsible and contribute to sustainable development.

EMS Framework and Continuous Improvement

Our EMS is based on the Deming circular model, or PDCA (Plan, Do, Check, Act), which fosters continuous improvement. This approach drives efforts to enhance environmental performance in alignment with the company's environmental policy.

Environmental Policy

The environmental policy serves as the foundation of the EMS. It reflects top management's commitment to:

- Legal compliance
- Continuous improvement
- Pollution prevention

This policy establishes a clear framework for setting and evaluating environmental goals and targets. It is shared with all employees and made readily available to the public, ensuring transparency and alignment throughout the organization.





Key Components of the EMS

1. Environmental and Context Analysis

We identify significant environmental aspects and risks associated with our production activities. Based on this analysis, we develop action plans for continuous improvement.

2. Procedures and Operating Instructions

The EMS outlines clear responsibilities and tasks related to environmental management, including:

- Waste handling
- Emission control
- Emergency response procedures

3. Monitoring and Control Systems

Environmental results are regularly monitored, covering aspects such as:

- Water quality
- Energy consumption
- Waste generation

4. Training Programs

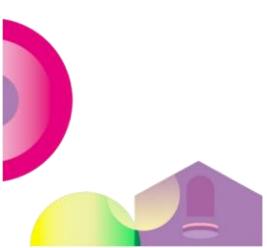
Staff undergo regular training on the environmental impact of production processes and emergency management procedures. These programs increase awareness of environmental risks and proper handling techniques.

5. Internal Audits

Periodic audits are conducted to ensure that EMS is implemented effectively and environmental goals are being met. Audit results are reviewed in management meetings to guide further improvements.

Transparency and Community Engagement

ACS Dobfar's EMS reflects our commitment to integrating environmental concerns into our production activities and maintaining open communication with the community and public authorities.





Conclusion

Environmental conservation is a collective responsibility that ACS Dobfar proudly embraces with professionalism, competence, and humility. Our commitment goes beyond compliance with regulations—it is rooted in a deep understanding of the impact our operations have on the planet and our responsibility to future generations.

